

### Blending

Heavy Duty Pumps - Bunker Fuel

#### TURNKEY SOLUTIONS

There are many variables to take into account when fitting a blending system and our highly skilled engineers will adapt our system to fit your exact requirements.

#### TECHNICAL SUPPORT

We are with you all the way. Before, during and after the implementation to secure a flawless integration and operation.

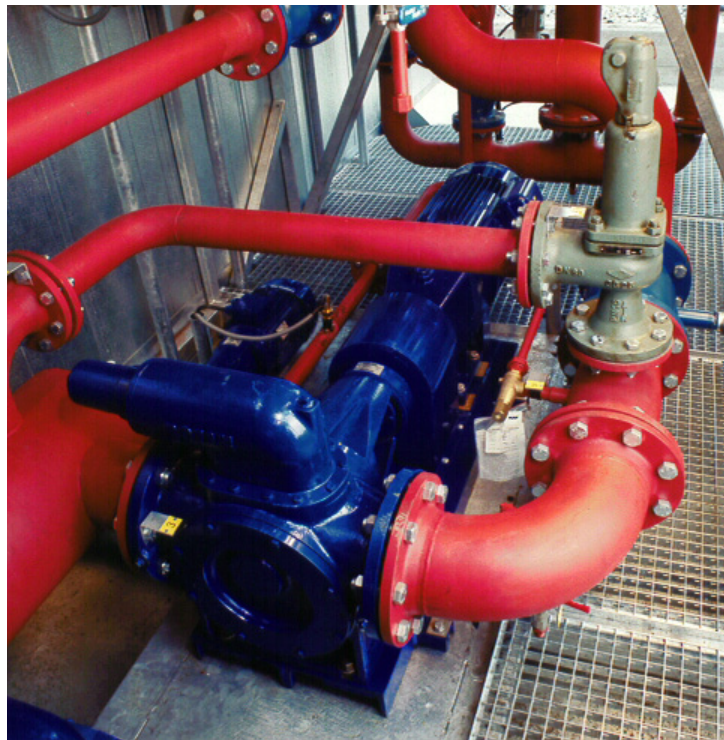
#### ZERO DOWNTIME

As a central part of a bunker delivery system; mechanical stability, toughness and durability is an important aspect of the manufacturing and design philosophy.

For more information on these or other of our products or services please visit us on the Web at:

[www.cbi.dk](http://www.cbi.dk)

## Go4 HD 201 Heavy Duty Cast Iron Pump Capacity 150 m<sup>3</sup>/hour @ 8 bar



### Go4 HD 201 Pumps

The Go4 HD (heavy duty) pumps are specifically designed for difficult applications involving high viscosity liquids. Go4 HD pumps are known by their sturdy and simple construction and reliable operation. All parts that are in contact with the liquid are made of stainless steel.

The modular design of the pumps allow a large number of pump configurations, it is therefore possible to adapt the pump for specific tasks. The pump allows reversible pumping, the direction of flow is determined only by the direction of rotation of the motor.

No matter what the application, the Go4 HD Pump is built tough and get the job done without constant worries about pump failure and costly repairs.

The pump can be provided with a relief valve to prevent overpressure.

#### OPTIONS

##### Two-Speed Regulation

Regulation of 50% or 100% by inserting a coupled electric motor.

##### Frequency Regulation

Stepless regulation 10-100% can be obtained by supplying frequency regulators together with electrical motors.

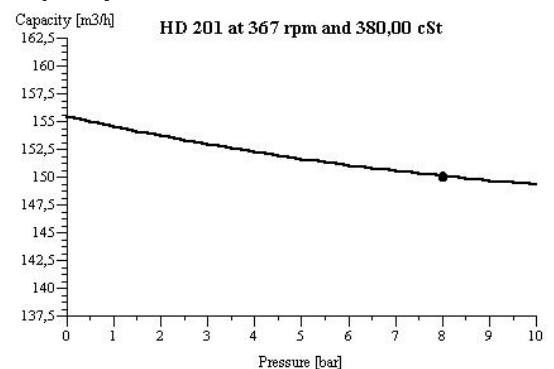
##### Intelligent Pump Guard

Optimizes and protects the pump system and prevents harmful overpressure and vacuum on the suction side. The pump rate is adjusted as fast as the piping allows.

#### Easy to Maintain

In the event a pump should ever need service, the limited number of parts allows for easy disassembly, inspection and maintenance without any special tools or talent.

#### Capacity Curve



#### SERVICES AVAILABLE

Consulting Services  
Technical Support  
Installation and Setup  
Maintenance  
Warranty

### Technical Specifications Go4 HD 201 - Bunker Fuel Oil Measurements @ 368 rpm and 380 cSt

Capacity	150,09 m <sup>3</sup>
Capacity – Min.	148,53 m <sup>3</sup>
Capacity – Max.	151,65 m <sup>3</sup>
Pressure	8 bar
Speed	367 rpm (50% 183,5 rpm)
Speed Max. %	92%
Power Consumption	49,6 kW
Rotor Speed	7,59 m/s
NPSHr	4,53 m/c
Torque	1.291,83 Nm
Max. Viscosity	75.000 cSt



INTELLIGENT BUNKERING SOLUTIONS

Go4 Bunker ApS

Lille Blodevej 3

DK-3600 Frederikssund

Denmark

+45 4731 3388

[www.cbi.dk](http://www.cbi.dk)